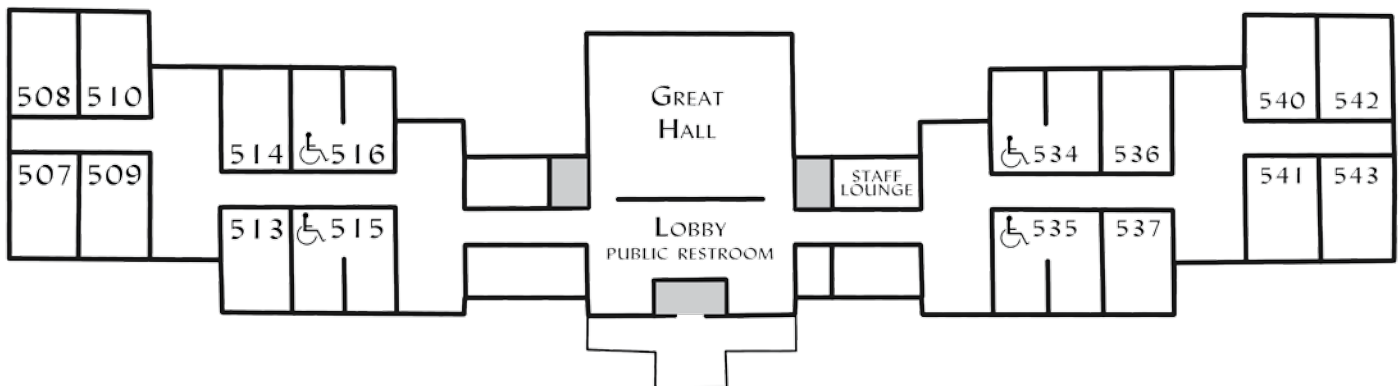


# LONG LAKE CONSERVATION CENTER NORTH STAR LODGE FLOOR PLAN

## NORTH STAR LODGE

- ◆ Great Hall with fireplace.
- ◆ Lobby with public restroom.
- ◆ 16 Bedrooms:
  - Occupancy for 128 total.
  - 4 rooms fully accessible.
  - Each room has:
    - 8 beds;
    - Shower;
    - Toilet;
    - 2 sinks;
    - Storage/organizer area.
- ◆ Staff Lounge.
- ◆ 4 "People Pocket" areas for small groups.



**LONG LAKE CONSERVATION CENTER**  
**NORTH STAR LODGE ROOMING LIST I**

School groups, please put at least 6 students in a room.

\*Rooms 515, 516, 534, and 535 are fully accessible. Please assign them to adult staff unless the accessible facilities are needed by a student.

Please indicate staff rooms with an 'S' behind the room number.

Room 507

---

---

---

---

---

---

---

---

Room 513

---

---

---

---

---

---

---

---

Room 508

---

---

---

---

---

---

---

---

Room 514

---

---

---

---

---

---

---

---

Room 509

---

---

---

---

---

---

---

---

Room 515\*

---

---

---

---

---

---

---

---

Room 510

---

---

---

---

---

---

---

---

Room 516\*

---

---

---

---

---

---

---

---

**LONG LAKE CONSERVATION CENTER**  
**NORTH STAR LODGE ROOMING LIST 2**

School groups, please put at least 6 students in a room.

\*Rooms 515, 516, 534, and 535 are fully accessible. Please assign them to adult staff unless the accessible facilities are needed by a student.

Please indicate staff rooms with an 'S' behind the room number.

Room 534\*

---

---

---

---

---

---

---

---

Room 540

---

---

---

---

---

---

---

---

Room 535\*

---

---

---

---

---

---

---

---

Room 541

---

---

---

---

---

---

---

---

Room 536

---

---

---

---

---

---

---

---

Room 542

---

---

---

---

---

---

---

---

Room 537

---

---

---

---

---

---

---

---

Room 543

---

---

---

---

---

---

---

---